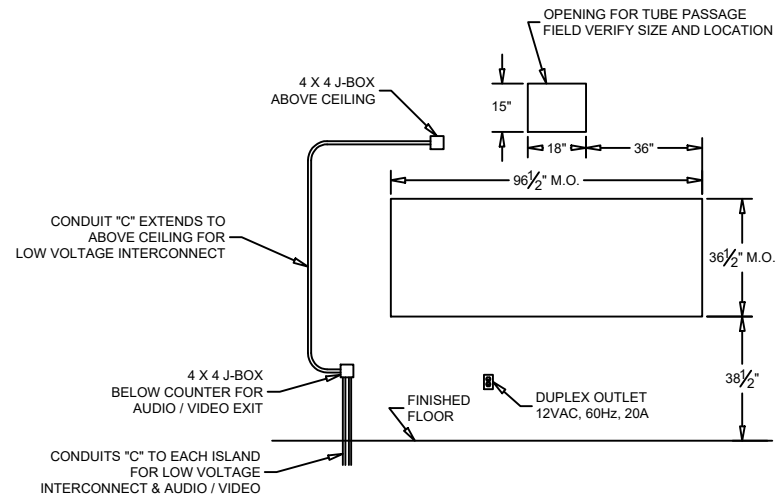
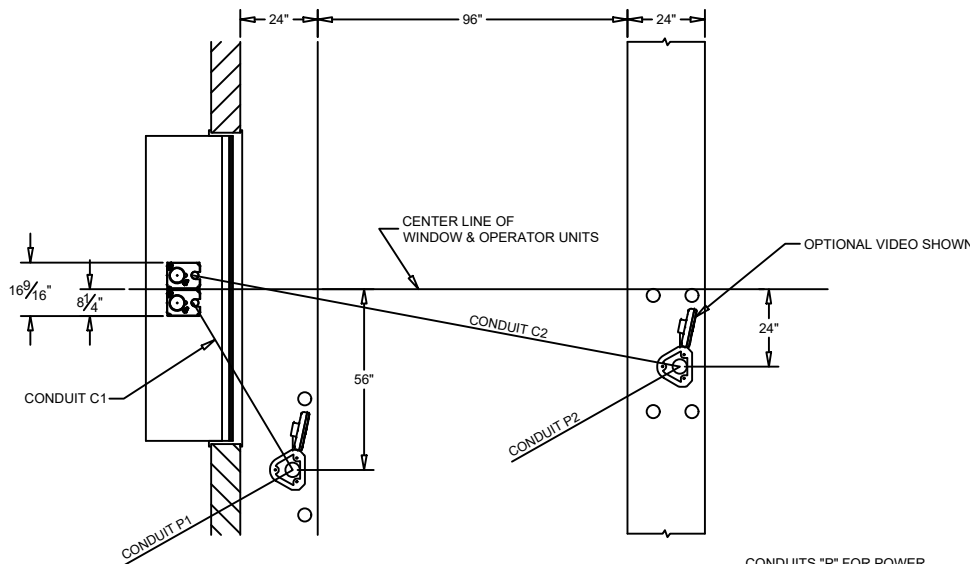


SECTION



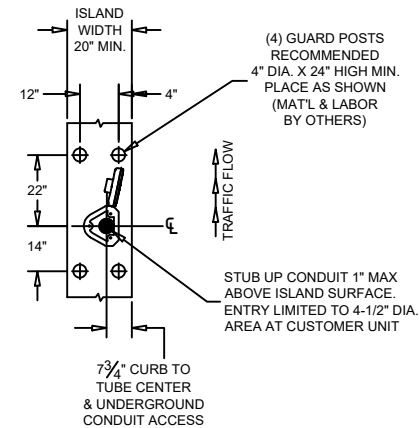
MASONRY DETAIL
(FOR MODEL 038V U.L. WINDOW)



PLAN

NOTE: CONDUITS "P" TO BUILDING POWER PANEL
CONDUITS "C" TO JUNCTION BOX BELOW COUNTER
AND EXTENDED ABOVE CEILING TO TELLER AREA

CONDUITS "P" FOR POWER
120VOLT, 60HZ, 20 AMP
DEDICATED BRANCH CIRCUIT
REQUIRED FOR EACH CUSTOMER UNIT.



ISLAND DETAIL

ADDITIONAL DRAWINGS TO REFERENCE:
95-261, 99-915, & 99-1140

est. 1967 HAMILTON CUSTOM MADE SECURITY	PROPRIETARY AND CONFIDENTIAL THESE DRAWINGS ARE THE PROPERTY OF HAMILTON SAFE CO. AND SHALL NOT BE REPRODUCED, COPIED, USED AS THE BASIS FOR MANUFACTURE OR SALE OF APPARATUS WITHOUT PERMISSION	DESCRIPTION PNEUMATIC TUBE SYSTEMS MODEL HA1000-XLR "202" SYSTEM - OVERHEAD TUBING	
		DRAWING/MODEL NUMBER 99-1147	DATE 10/8/2021